

WiFi SENSOR *QUICK START GUIDE*

**Using Point Six™ WiFi Sensors with Host
Controllers, Servers and Protocol Converters**

You will need a Configuration Cable 3008-CT purchased separately.

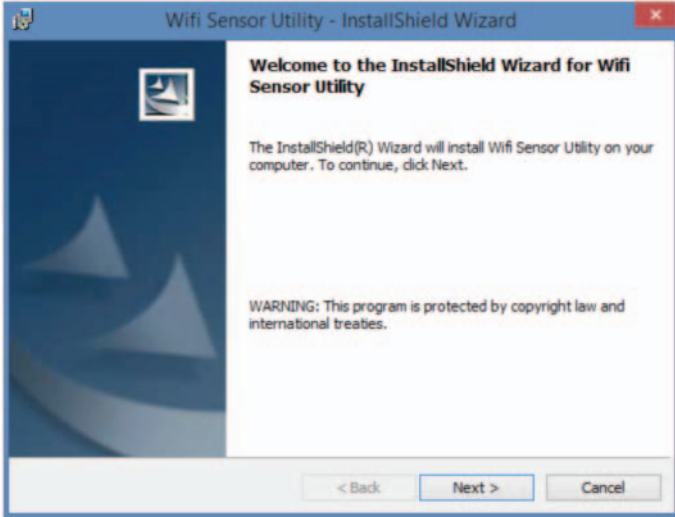


STEP 1 – DOWNLOAD SOFTWARE

- Download WiFi Sensor Utility from:
<http://pointsix.com/EXE/WifiSensorUtilitySetup.exe>
- Start Program

STEP 2 – CONNECT USB CABLE TO COMPUTER

****Important: WiFi Sensor Utility download from Step 1 must be complete prior to connecting USB cable.**



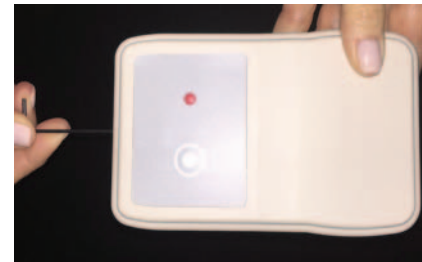
STEP 3 – OPEN SENSOR



VM Series



Sealed Series



Wallmount Series

STEP 4 – TURN SENSOR ON - see illustrations in step 5

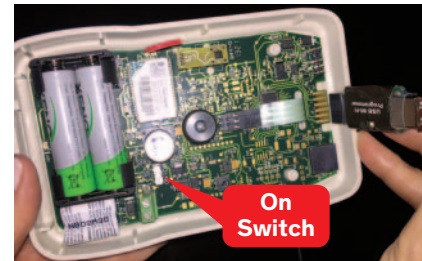
STEP 5 – CONNECT USB CABLE TO WiFi SENSOR



VM Series

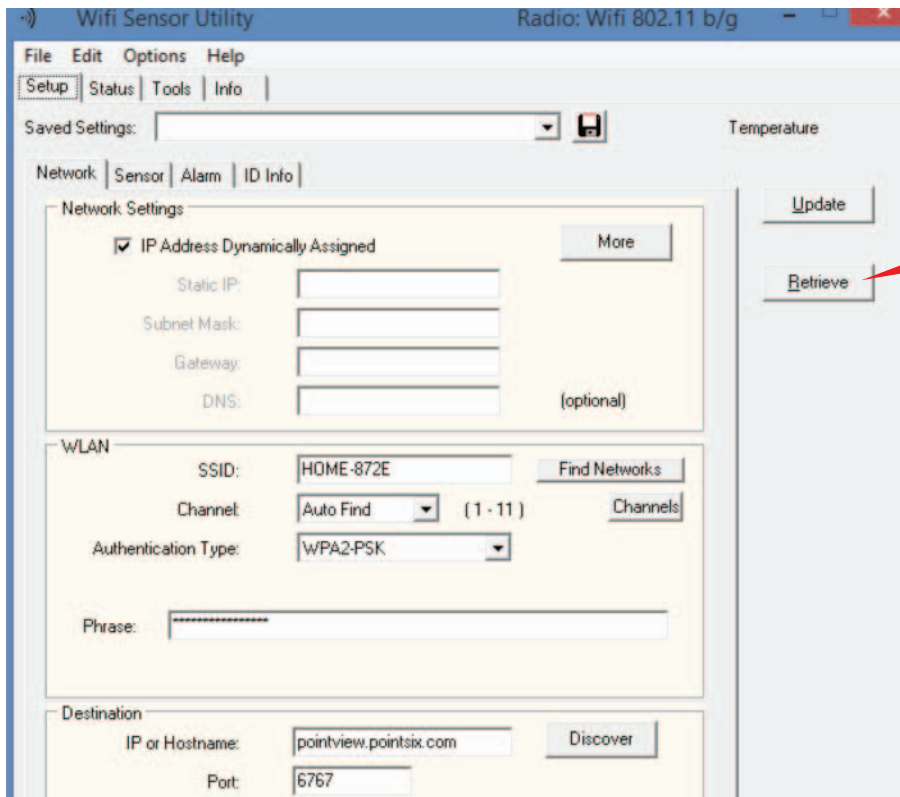


Sealed Series



Wallmount Series

STEP 6 – CLICK “RETRIEVE” TO IDENTIFY SENSOR TYPE



STEP 7 – CONNECT TO YOUR WiFi NETWORK

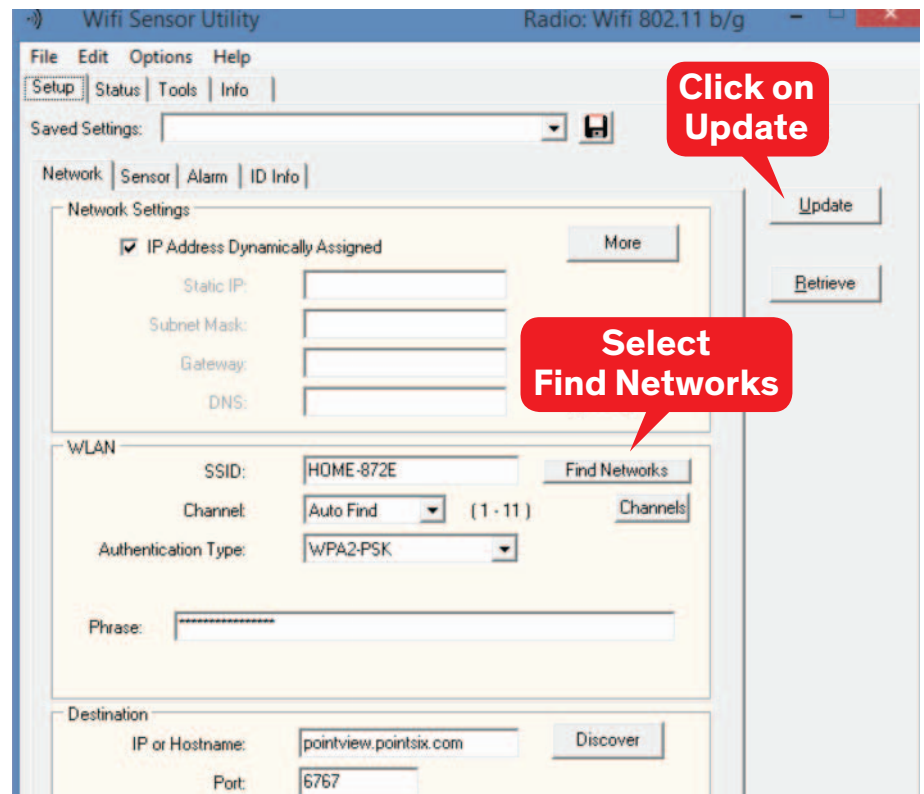
Automatically Find Networks

- Select “Find Networks”
- A list of available WiFi Networks will appear
- Select your network from the list
- If required, enter your passphrase
- Enter Destination IP (Hostname)
- Click “update”

or

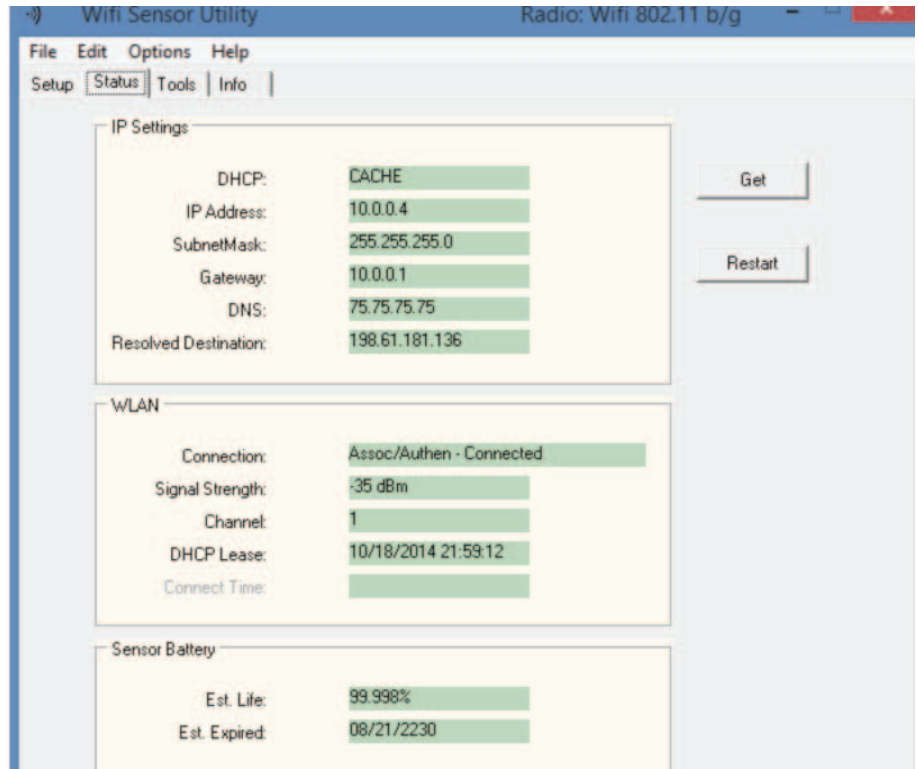
Manually Enter Network Information

- Enter the parameters for SSID, Radio Channel, Authentication Type and Passphrase
- Enter Destination IP (Hostname)
- Click “update”



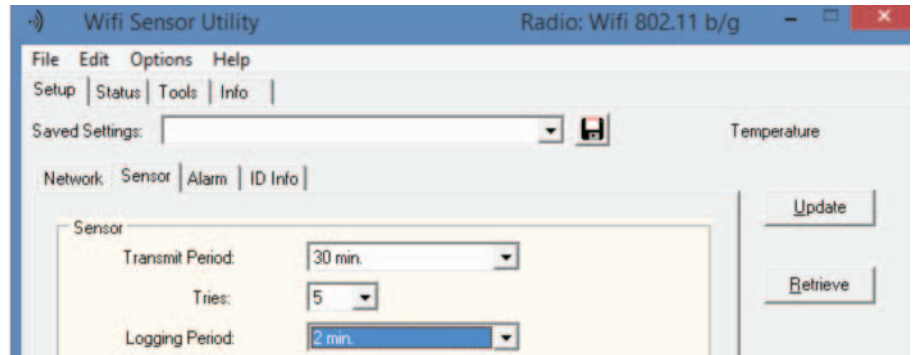
STEP 8 – VERIFY SENSOR HAS JOINED THE NETWORK

- Click on the “status” tab to verify the sensor is Associated and Authenticated
- If not Associated and Authenticated refer to the Troubleshooting Guide for more help
- If using DHCP, verify the sensor has been assigned a valid IP address



STEP 9 – SENSOR SETUP

- Go to the “setup” tab
- Select the “sensor” tab
- Choose Transmit Period
- Choose number of Tries
- Choose Logging Period



STEP 10 – ALARM SETUP

- Select the “alarm” tab and enter high and low alarm limits
- Choose time span for alarm limits
- Click “update”

